

RD60Q.1.S系列 - 桥式两侧可打开

Series of RD60Q.1.S - Bridge type open of both side



闭合状态：
Opening type:

- Q** 桥式
Bridge type
- F** 全封闭式
Enclosed
- BF** 半封闭式
Semi-enclosed

注：无字母为普通型
Note: blank means general type

打开方式：
Opening way:

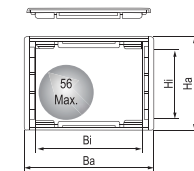
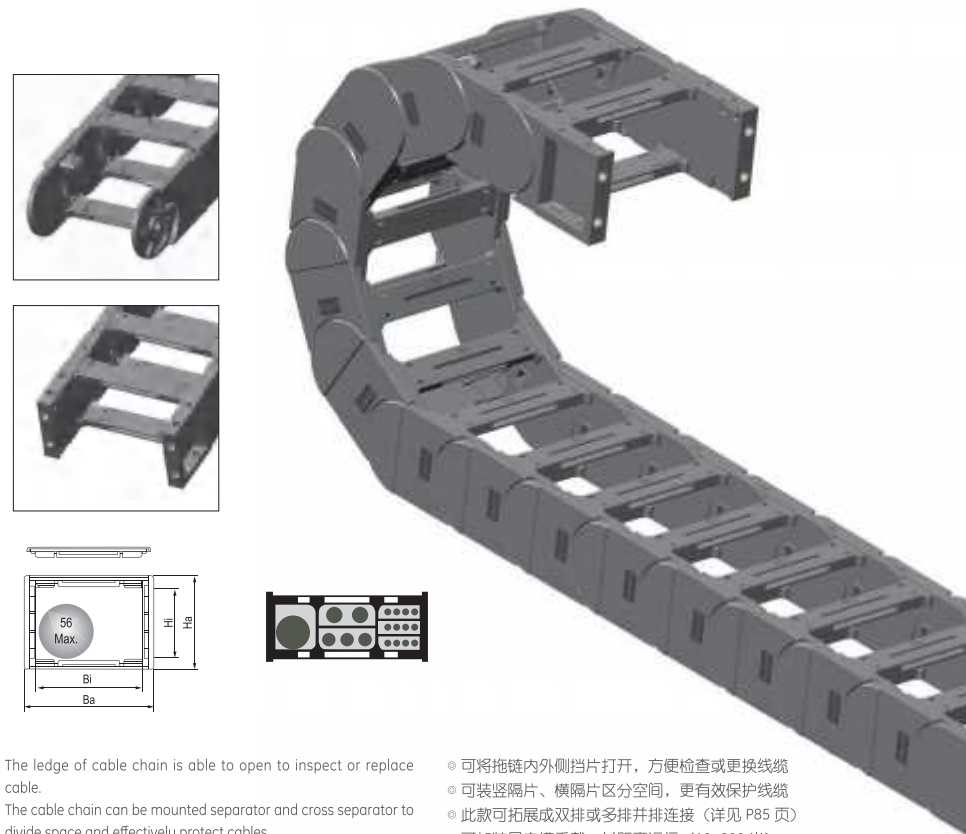
- B** 不可打开
Non-opening
- S** 双侧打开
Open of both side
- W** 外侧打开
Exterior opening
- N** 内侧打开
Interior opening
- F** 无需打开
Without opening

款式：
Style:

- Q.B** 桥式不可打开
Bridge type non-opening
- Q.N** 桥式内侧开
Bridge type interior opening
- Q.W** 桥式外侧开
Bridge type exterior opening
- Q.S** 桥式双侧可打开
Bridge type both side opening
- BF.B** 半封闭不可开
Semi-enclosed non-opening
- BF.N** 半封闭内侧开
Semi-enclosed interior opening
- BF.W** 半封闭外侧开
Semi-enclosed exterior opening
- BFS** 半封闭双侧开
Semi-enclosed both side opening
- F.N** 封闭内侧开
Enclosed interior opening
- F.W** 封闭外侧开
Enclosed exterior opening
- F.S** 封闭双侧开
Enclosed both side opening

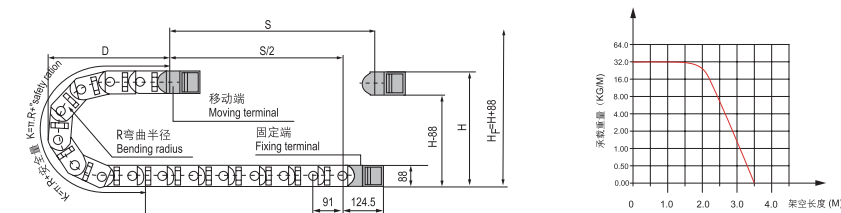
接头类型：
Bracket type:

- X** 斜型接头
Oblique bracket
- F** 方型接头
Square bracket



- ◎ The ledge of cable chain is able to open to inspect or replace cable.
- ◎ The cable chain can be mounted separator and cross separator to divide space and effectively protect cables.
- ◎ The cable chain can be expanded by connecting two row or rows in Parallel.(See P85)
- ◎ The cable chain can be mounted gateway to overloading and long distance running (10-200 meters).
- ◎ 可将拖链内外侧挡片打开，方便检查或更换线缆
- ◎ 可装竖隔片、横隔片区分空间，更有效保护线缆
- ◎ 此款可拓展成双排或多排并排连接（详见 P85 页）
- ◎ 可加装导向槽重载、长距离运行（10~200 米）

主要技术参数 Basic technical data



节距=91mm, 每米节数=11, 链长=S/2+K, S=行程距离, K=π.R+“安全量”
Pitch=91mm, link per meter=11, length of chain=S/2+K, S=stroke. K=π.R+“safety ration”+1 Pitch

R	135	150	175	200	250	300	450
H	358	388	438	488	588	688	988
D	270	285	310	335	385	435	585
K	637	728	819	910	1001	1183	1638

安装实际高度:H_i=H+88mm(负载 2.2kg/m)
Actual mounting height:H_i=H+88mm(load 2.2kg/m)

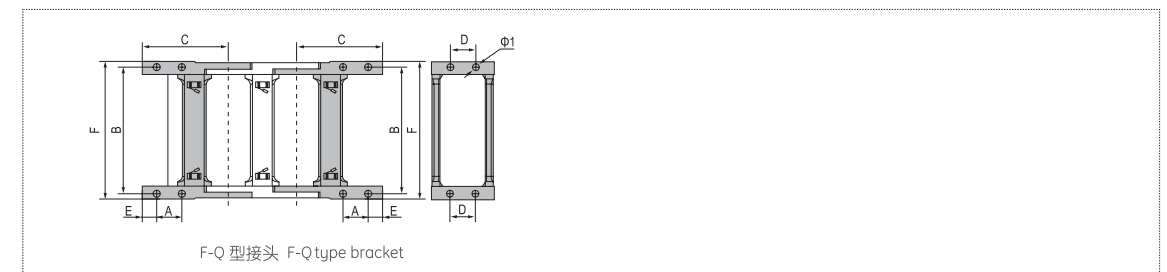
RD60Q.1.S系列 - 桥式两侧可打开 Series of RD60Q.1.S-Bridge type open of both side



系列号 Series No.	内高 Hi	内宽 Bi	外高 Ha	外宽 Ba	款式 Styles	弯曲半径 Bending radius R	固定接头类型及参数 Bracket type and parameters									
							可配接头类型 Applicable bracket type	孔径 Bore diameter φ1	孔距 (mm)hole distance						代号 No.	
									A	B	C	D	E	F		
RD60Q.1.75S	60	75	88	111	Q.S	135,150,175, 200,250, 300,450	F-Q	9	35	98	125	45	20	115	RD60Q.1.75S-FJT	
RD60Q.1.100S	60	100	88	136	Q.S		F-Q	9	35	123	125	45	20	140	RD60Q.1.100S-FJT	
RD60Q.1.125S	60	125	88	161	Q.S		F-Q	9	35	148	125	45	20	165	RD60Q.1.125S-FJT	
RD60Q.1.150S	60	150	88	186	Q.S		F-Q	9	35	173	125	45	20	190	RD60Q.1.150S-FJT	
RD60Q.1.175S	60	175	88	211	Q.S		F-Q	9	35	198	125	45	20	215	RD60Q.1.175S-FJT	
RD60Q.1.200S	60	200	88	236	Q.S		F-Q	9	35	223	125	45	20	240	RD60Q.1.200S-FJT	
RD60Q.1.250S	60	250	88	286	Q.S		F-Q	9	35	273	125	45	20	290	RD60Q.1.250S-FJT	
RD60Q.1.300S	60	300	88	336	Q.S		F-Q	9	35	323	125	45	20	340	RD60Q.1.300S-FJT	
RD60Q.1.350S	60	350	88	386	Q.S		F-Q	9	35	373	125	45	20	390	RD60Q.1.350S-FJT	

注：S 表示两侧可打开
Note: S indicates that the both side open

固定接头类型及参数 Fix bracket type and parameters (见表格 See table)



订货示例 Order Sample

示例 拖链内高 60mm、内宽 75mm、半径 135mm、长度 1 米 /11 节 (Sample: inner height 60mm, inner width 75mm, radius 135mm, length 11 links/1 meter)

- 拖链 Chain RD60Q.1.75S R135 1000mm/11 Links
- 接头 Bracket RD60Q.1.75S -XJT 副 (Set)
- 配件 Accessories 每节装 1 个竖隔片 / 1 个横隔片 (1 vertical shim/1 horizontal shim can be mounted in every link)

注：可根据客户要求定制各种规格。 Note: Various sizes can be customized according to customer requirements.