

# RD25F.1.S系列 - 封闭两侧可打开

## Series of RD25F.1.S-Sealing type both side opening



闭合状态:  
Opening type:

- Q** 桥式  
Bridge type
- F** 全封闭式  
Enclosed
- BF** 半封闭式  
Semi-enclosed

注: 无字母为普通型  
Note: blank means general type

打开方式:  
Opening way:

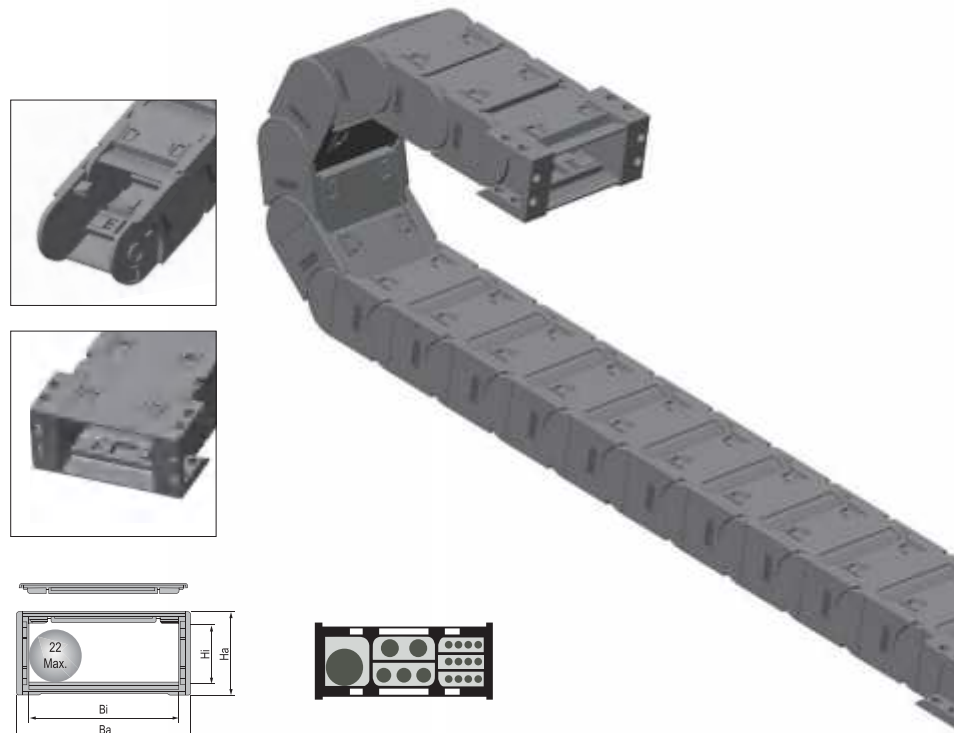
- B** 不可打开  
Non-opening
- S** 双侧打开  
Open of both side
- W** 外侧打开  
Exterior opening
- N** 内侧打开  
Interior opening
- F** 无需打开  
Without opening

款式:  
Style:

- Q.B** 桥式不可打开  
Bridge type non-opening
- Q.N** 桥式内侧开  
Bridge type interior opening
- Q.W** 桥式外侧开  
Bridge type exterior opening
- Q.S** 桥式双侧可打开  
Bridge type both side opening
- BF.B** 半封闭不可开  
Semi-enclosed non-opening
- BF.N** 半封闭内侧开  
Semi-enclosed interior opening
- BF.W** 半封闭外侧开  
Semi-enclosed exterior opening
- BF.S** 半封闭双侧开  
Semi-enclosed both side opening
- F.N** 封闭内侧开  
Enclosed interior opening
- F.W** 封闭外侧开  
Enclosed exterior opening
- F.S** 封闭双侧开  
Enclosed both side opening

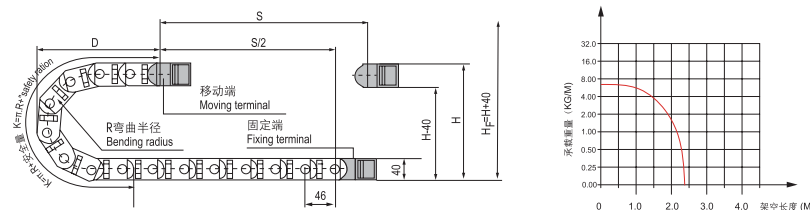
接头类型:  
Bracket type:

- X** 斜型接头  
Oblique bracket
- F** 方型接头  
Square bracket

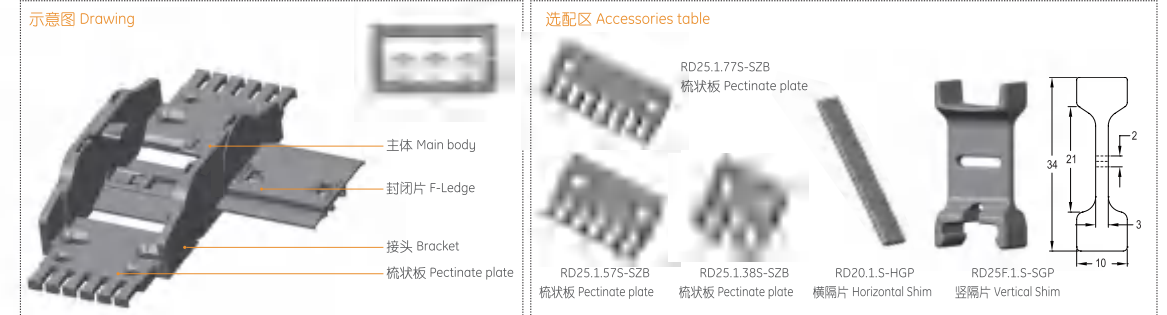


- ◎ The cable chain tested service life is up to 20 million times.
- ◎ The ledge of cable chain is able to open to inspect or replace cable.
- ◎ The inclined "X" type connector can be mounted pectinate plate to fix cable.(See accessories table)
- ◎ The cable chain is suitable for a diameter of 22mm or less of cable.
- ◎ 测试使用寿命达 2 千万次
- ◎ 可将拖链内外侧封闭片打开, 方便检查或更换线缆
- ◎ "X" 型接头可配梳状板, 更好的固定线缆 (见选配区)
- ◎ 适用于直径 22 毫米以下线缆

### 主要技术参数 Basic technical data



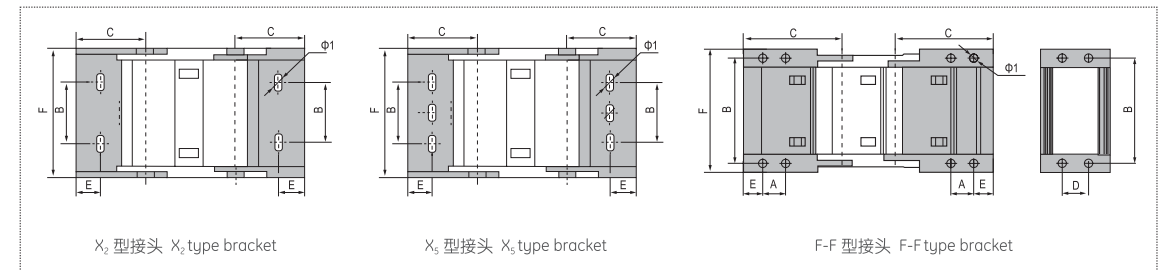
### RD25F.1.S系列 - 封闭两侧可打开 Series of RD25F.1.S-Sealing type both side opening



系列号 Series No.	内高 Hi	内宽 Bi	外高 Ha	外宽 Ba	款式 Styles	弯曲半径 Bending radius R	固定接头类型及参数 Bracket type and parameters							代号 No.	
							可配接头类型 Applicable bracket type	孔径 Bore diameter φ1	孔距 (mm)hole distance						
RD25F.1.38S	25	38	40	55	F.S	75,100,125,150,225	X <sub>2</sub>	6*12L	25	47	10	54	RD25F.1.38S-XJT		
							F-F	6	13	63	47	15	13	72	RD25F.1.38S-FJT
RD25F.1.50S	25	50	40	67	F.S		F-F	6	13	75	47	15	13	84	RD25F.1.50S-FJT
							X <sub>2</sub>	6*12L	44	43	10	73	RD25F.1.57S-XJT		
RD25F.1.57S	25	57	40	74	F.S		F-F	6	13	82	47	15	13	91	RD25F.1.57S-FJT
RD25F.1.60S	25	60	40	77	F.S		F-F	6	13	85	47	15	13	94	RD25F.1.60S-FJT
RD25F.1.75S	25	75	40	92	F.S		F-F	6	13	100	47	15	13	109	RD25F.1.75S-FJT
RD25F.1.77S	25	77	40	94	F.S		X <sub>5</sub>	6*12L	64	43	10	93	RD25F.1.77S-XJT		
							F-F	6	13	102	47	15	13	111	RD25F.1.77S-FJT
RD25F.1.100S	25	100	40	117	F.S		F-F	6	13	125	47	15	13	134	RD25F.1.100S-FJT

注: S 表示两侧可打开  
Note: S indicates that the both side open

### 固定接头类型及参数 Fix bracket type and parameters (见表格 See table)



### 订货示例 Order Sample

示例 拖链内高 25mm、内宽 38mm、半径 75mm、长度 1 米 /22 节 (Sample: inner height 25mm, inner width 38mm, radius 75mm, length 22 links/1 meter)

拖链 chain RD25F.1.38S R75 1000mm /22 Links

接头 Bracket RD25F.1.38S-XJT 副 [Set]

配件 Accessories

注: 可根据客户要求定制各种规格。 Note: Various sizes can be customized according to customer requirements.